



Service, Quality,

**TECHNICAL REVIEW TEAM (TRT) COMMITTEE
MEETING AGENDA
June 18, 2020 – 10:00 AM**

**CITY OF BIG BEAR LAKE,
DEPARTMENT OF WATER AND POWER
41972 GARSTIN DRIVE
BIG BEAR LAKE, CALIFORNIA 92315
WWW.BBLDWP.COM**

TRT COMMITTEE MEMBERS

Craig Hjorth, Treasurer
Scott Heule, Commissioner
Reggie Lamson, General Manager
Dani McGee, Chief Financial Officer
Steve Wilson, Water Superintendent
Jason Hall, Production Supervisor
Sierra Orr, Water Conservation and Public Information Supervisor
Tom Harder, Thomas Harder & Co. Ground Water Consulting

OPEN SESSION

CALL MEETING TO ORDER

PUBLIC FORUM

1. DISCUSSION/ACTION ITEMS

Groundwater Supply and Current Aquifer Water Level Review

- A. Review Hydrographs
- B. Groundwater Production History

Ground Water Related Management Decisions

- A. Governor's Drought Declaration
- B. Groundwater Sustainability Agency Update

Other Discussion Topics

- A. State Basin Designation, Very Low
- B. Conservation Policies
- C. Sawmill Well Pumping Plant
- D. Well Repair/Pump Replacement
- E. Other Discussion Topics

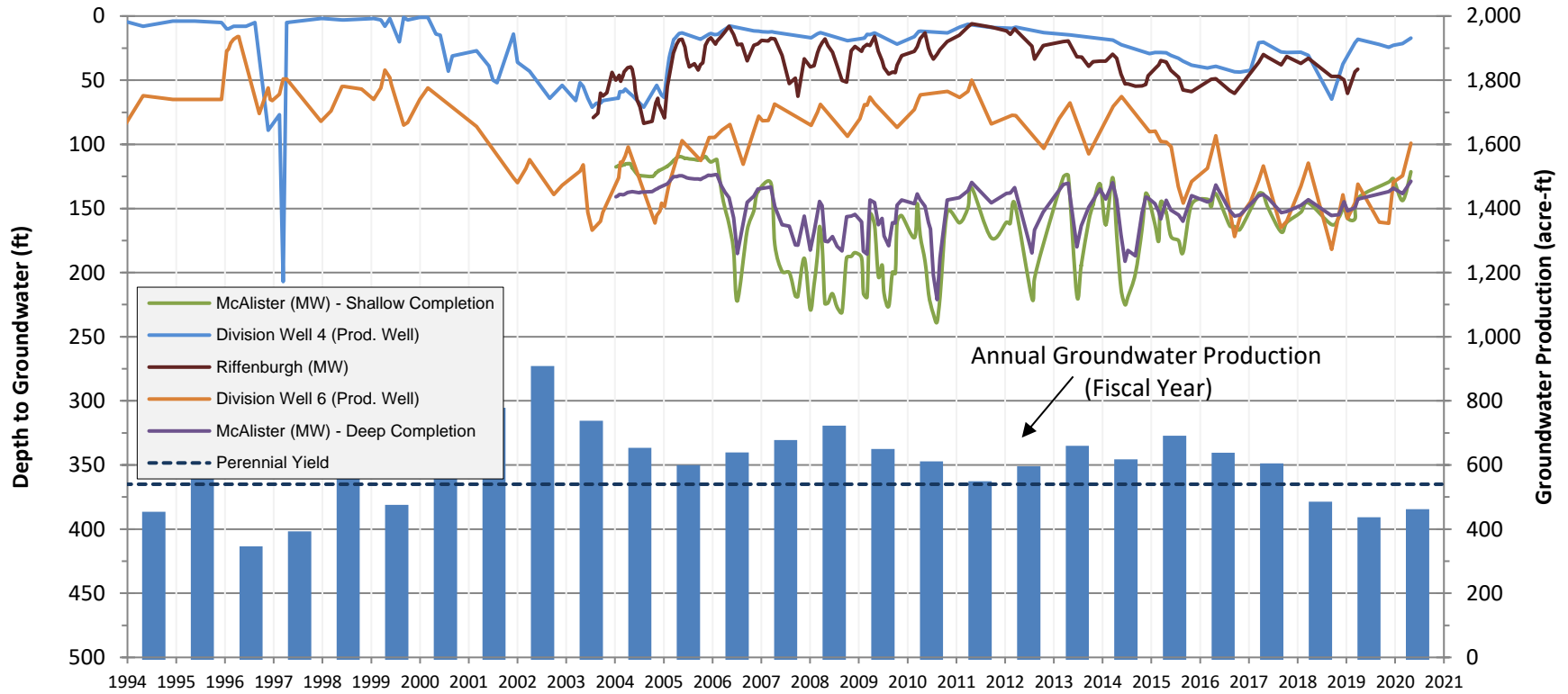
ADJOURNMENT

I hereby certify under penalty of perjury, under the laws of the State of California that the foregoing agenda was posted in accordance with the applicable legal requirements. Dated this 12th day of June 2020.

A handwritten signature in black ink that reads "Leeanne Eagleson".

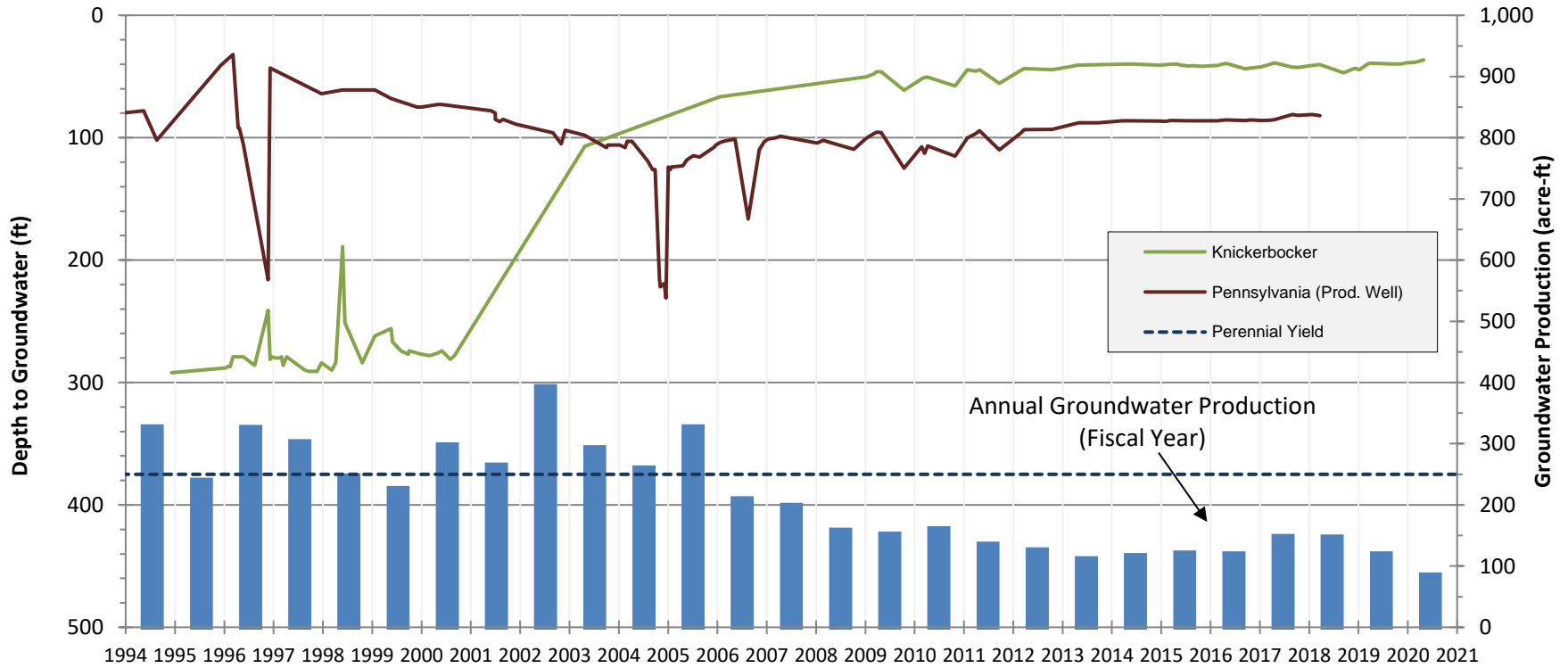
Leeanne Eagleson, Board Secretary
DWP Board of Commissioners

Division / North Shore Hydrologic Subunits Depth to Groundwater vs. Groundwater Production



2019 - 2020 Production is through May 31st

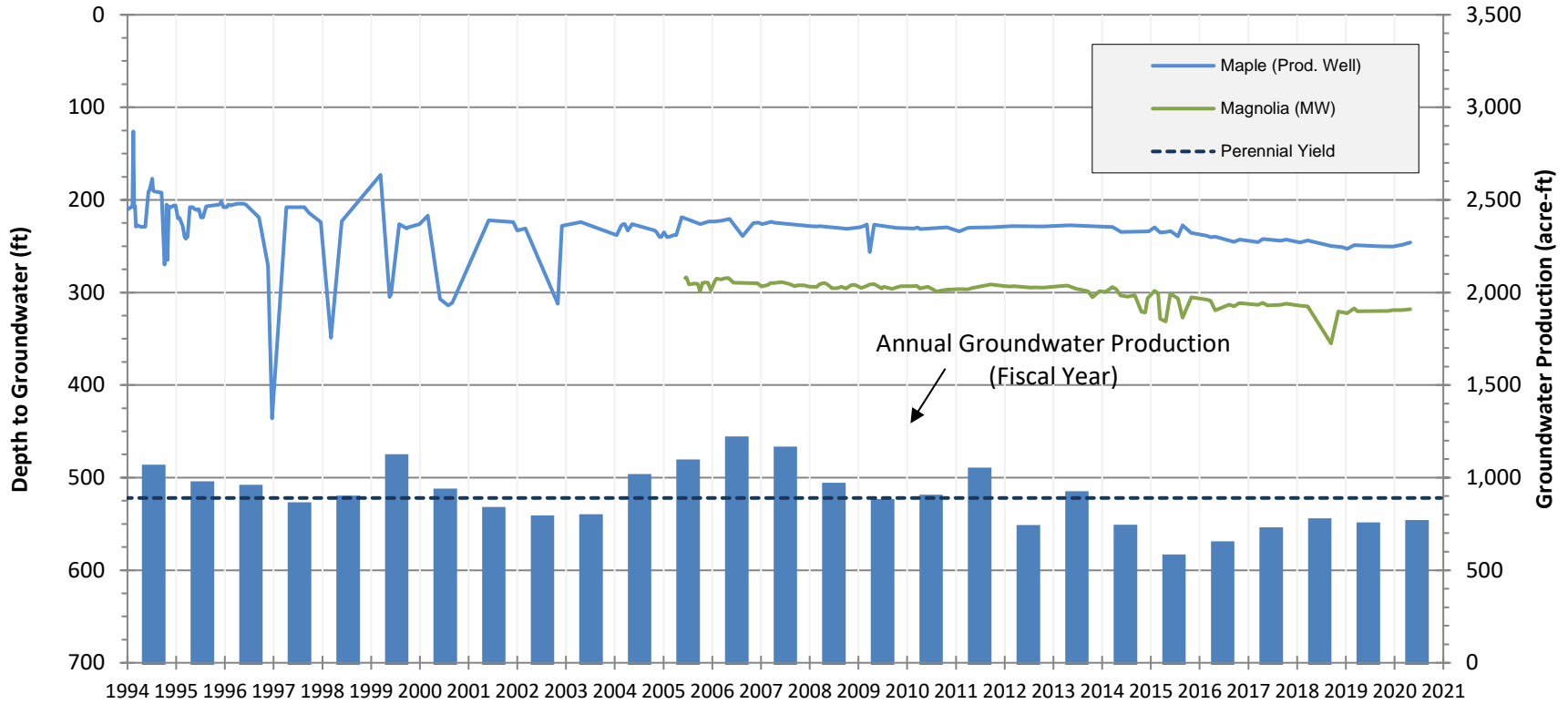
Village Hydrologic Subunit Depth to Groundwater vs. Groundwater Production



2019 -2020 Production is through May 31st

Erwin West Hydrologic Subunit

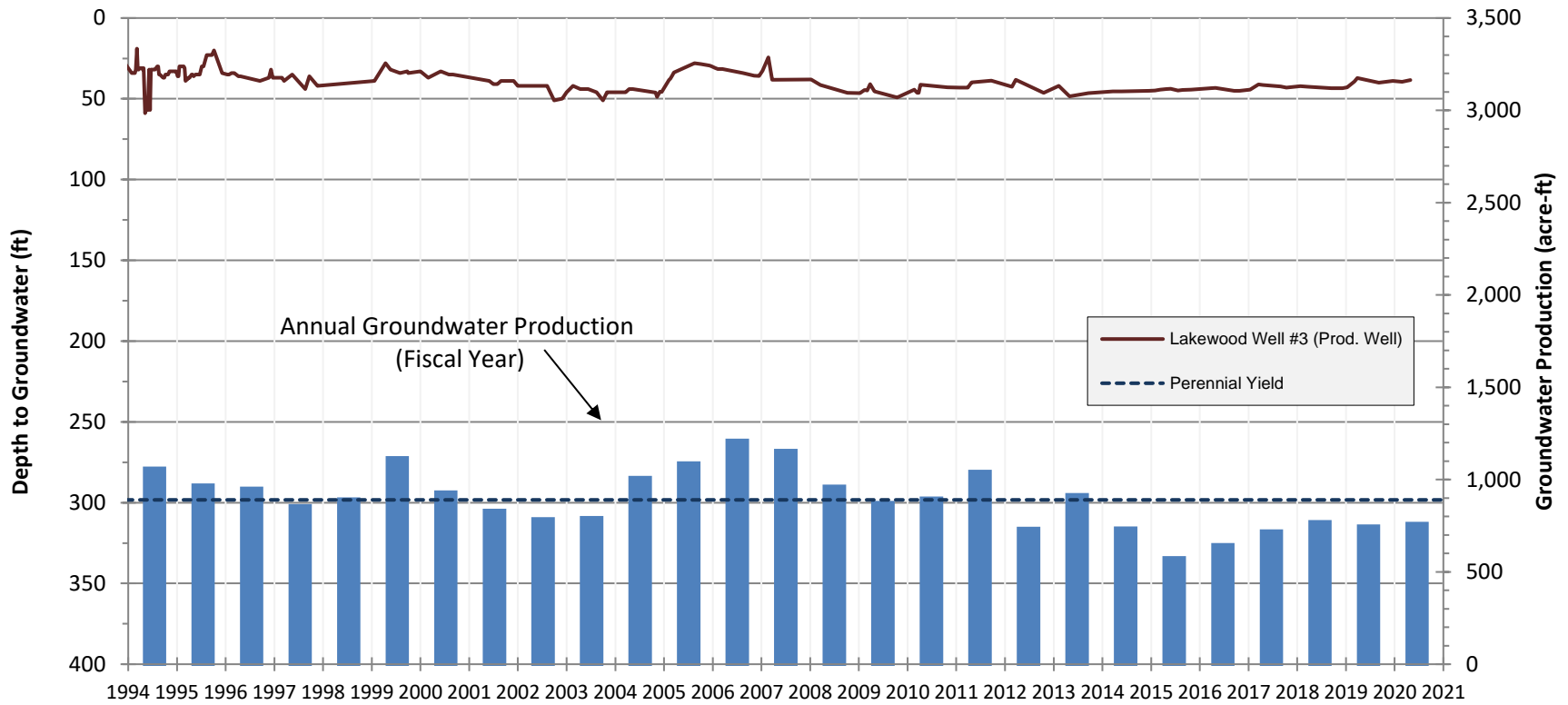
Depth to Groundwater vs. Groundwater Production



2019 - 2020 Production is through May 31st

Erwin Central Hydrologic Subunit

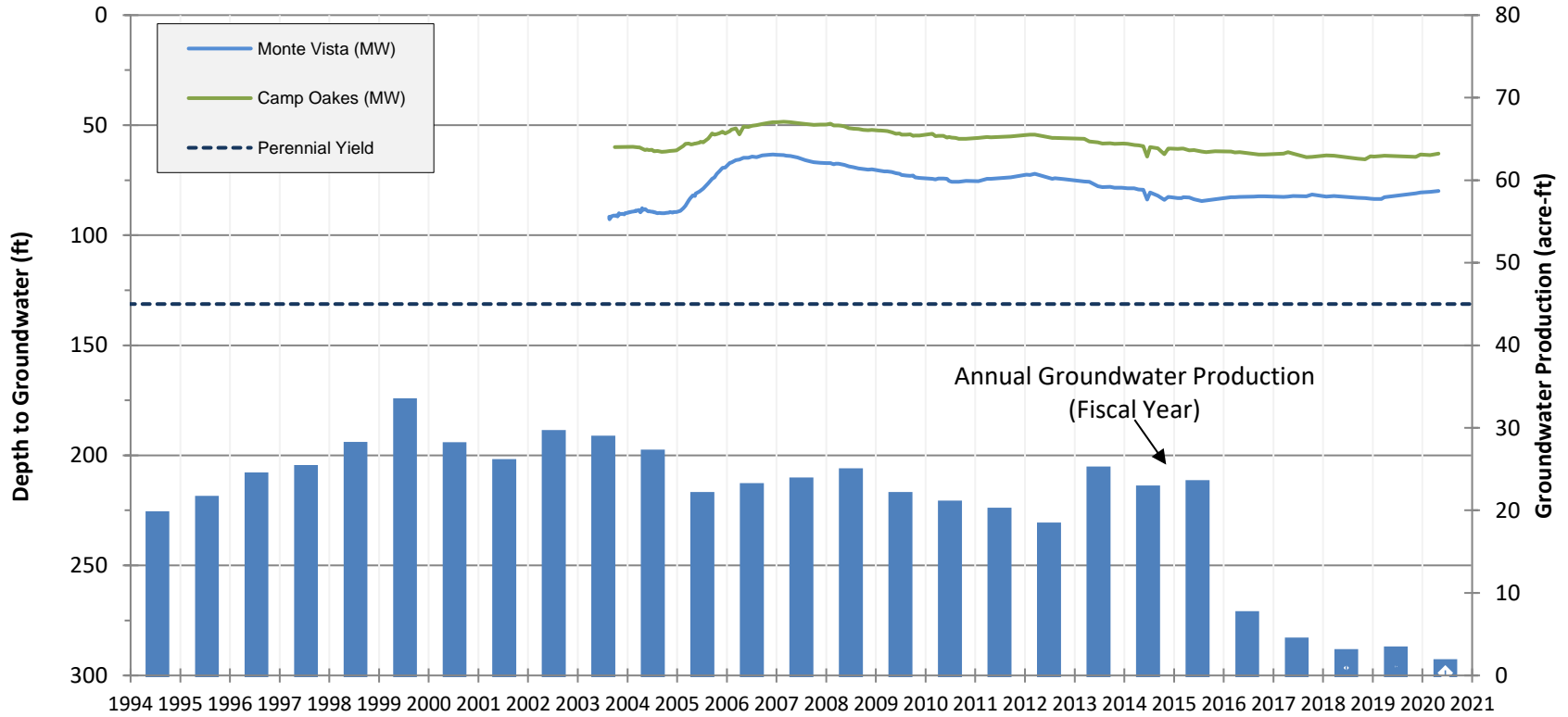
Depth to Groundwater vs. Groundwater Production



2019 - 2020 Production is through May 31st

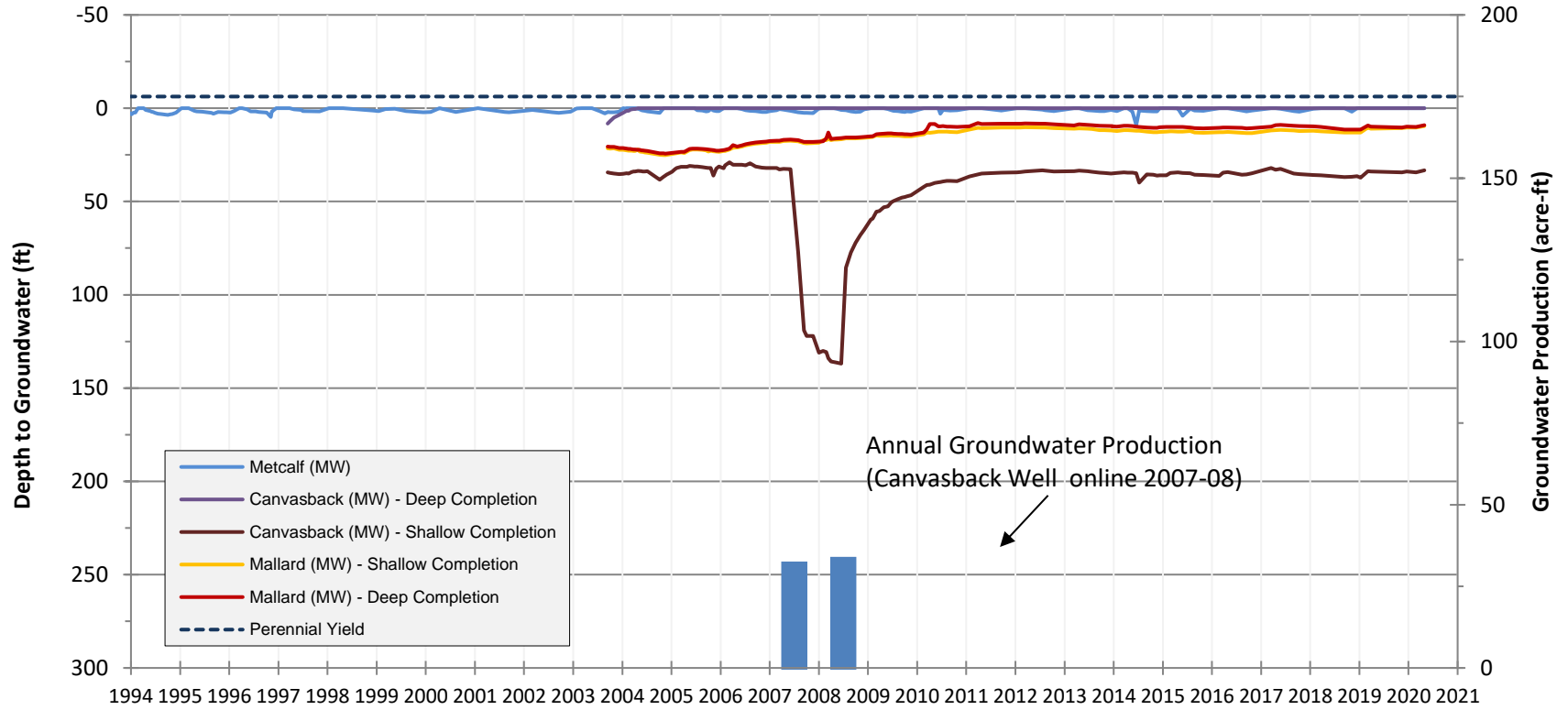
Erwin East - Lake William Hydrologic Subunit

Depth to Groundwater vs. Groundwater Production



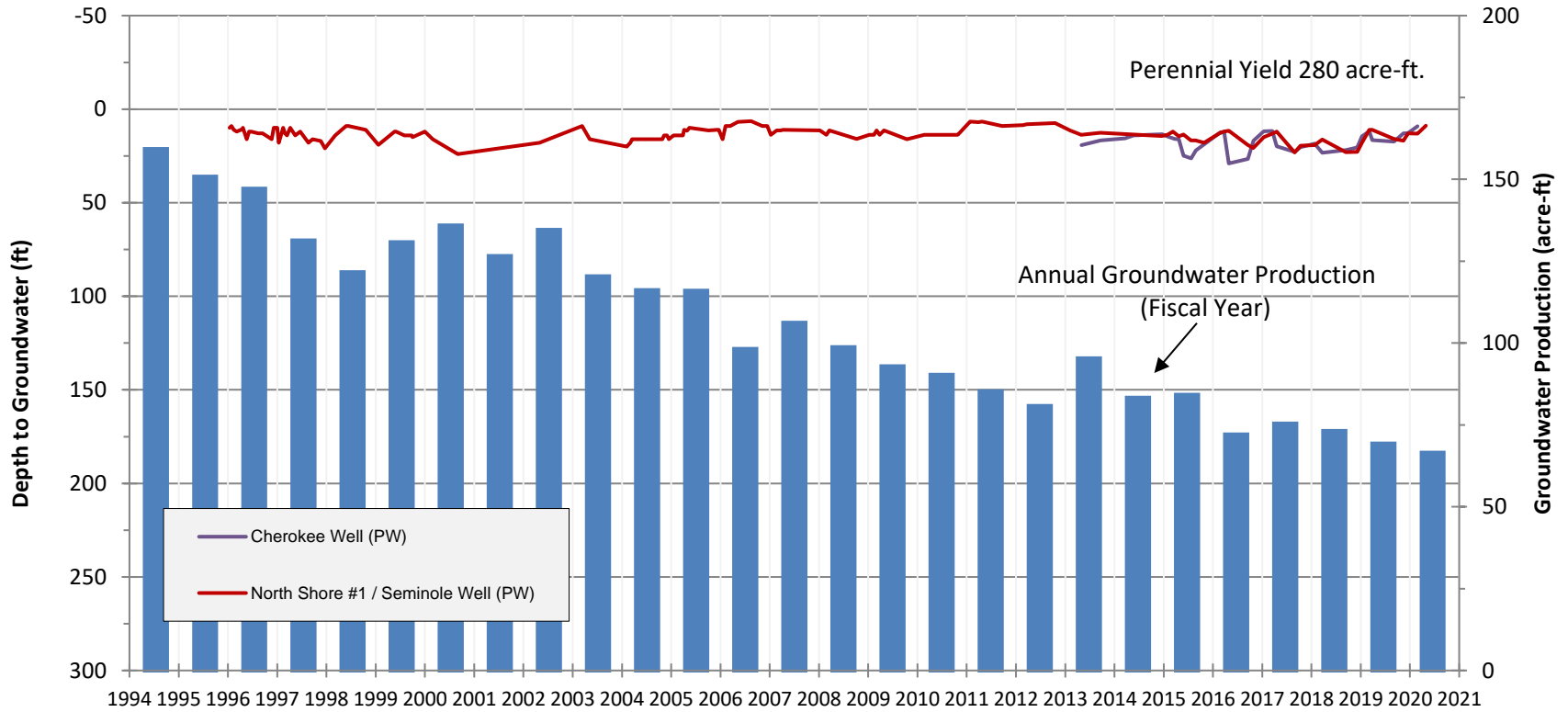
2019 - 2020 Production is through May 31st

Mill Creek Hydrologic Subunit Depth to Groundwater vs. Groundwater Production



2019 - 2020 Production is through May 31st

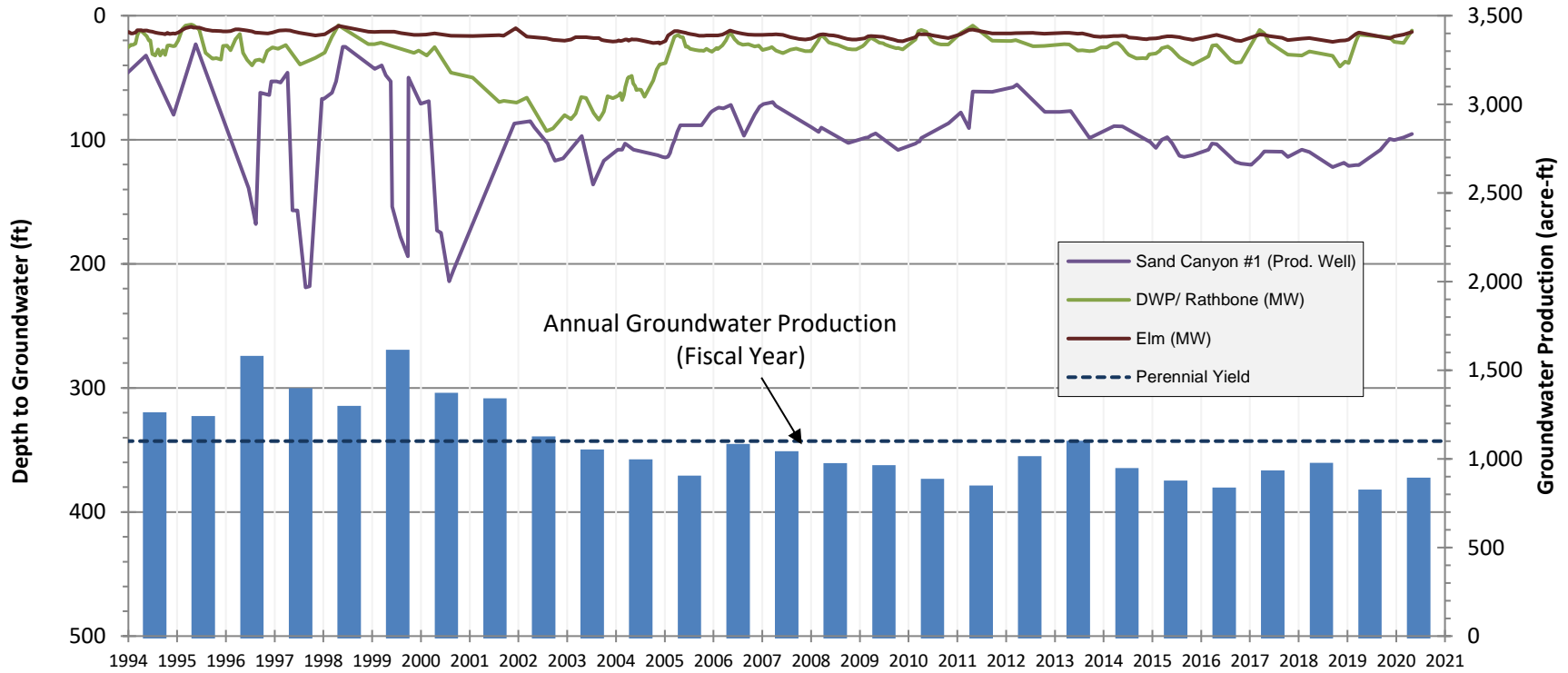
Grout Creek Hydrologic Subunit Depth to Groundwater vs. Groundwater Production



2019 - 2020 Production is through May 31st

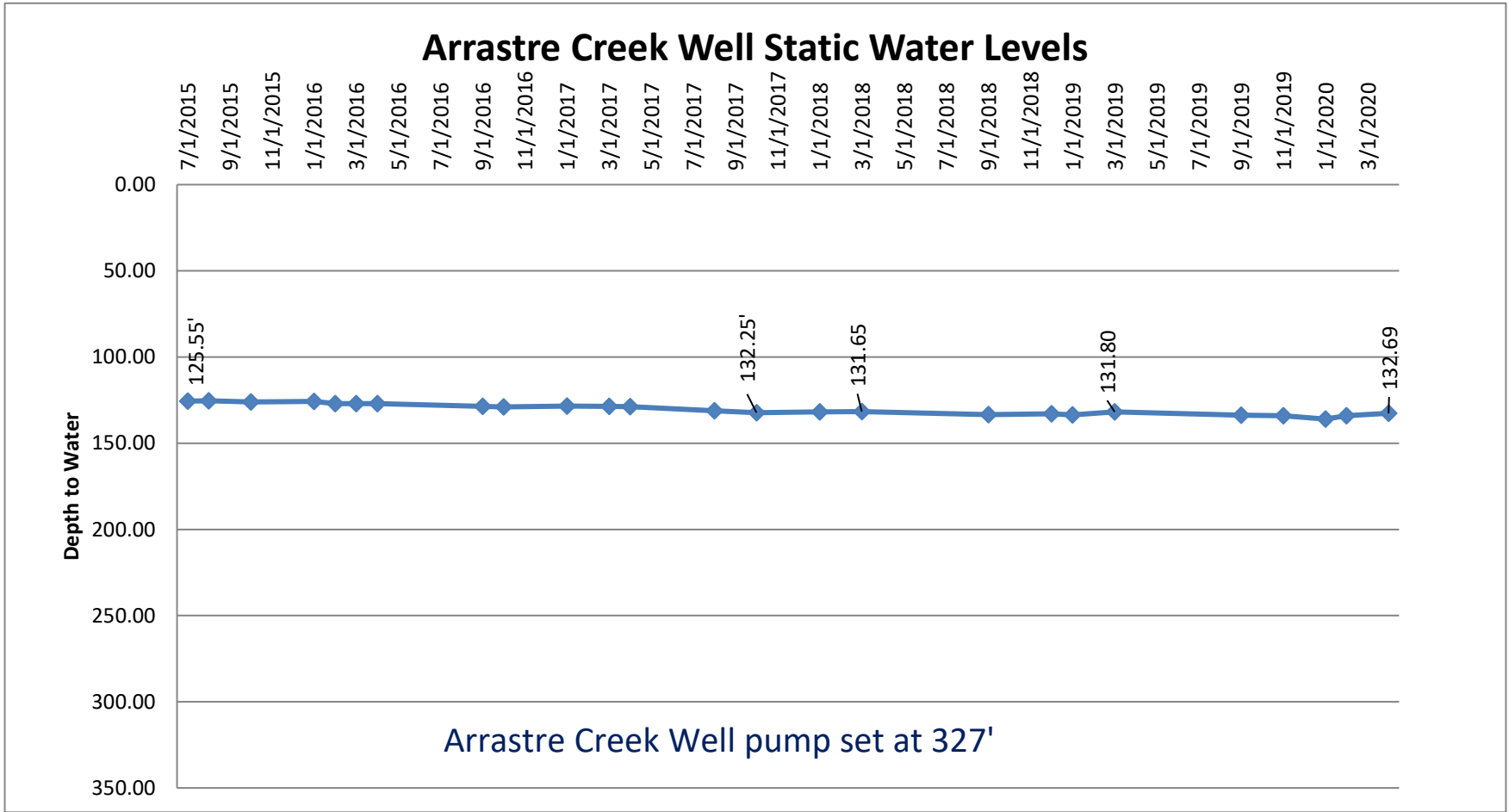
Rathbone Hydrologic Subunit

Depth to Groundwater vs. Groundwater Production



2019 - 2020 Production is through May 31st

Date	Level
7/24/2015	125.55
8/28/2015	125.37
10/29/2015	126.10
1/29/2016	125.70
2/26/2016	127.10
3/25/2016	127.00
4/29/2016	127.00
9/16/2016	128.60
10/27/2016	129.00
1/13/2017	128.50
3/17/2017	128.57
4/20/2017	128.76
8/31/2017	131.25
10/13/2017	132.25
1/26/2018	131.75
3/22/2018	131.65
9/13/2018	133.40
12/7/2018	132.90
1/11/2019	133.65
3/8/2019	131.80
9/6/2019	133.70
11/14/2019	134.00
1/9/2020	136.00
2/27/2020	134.1
4/29/2020	132.69



Yearly Production	
(Perennial Yield 500 AF)	
2015	10.74 AF
2016	23.55 AF
2017	23.73 AF
2018	25.44 AF
2019	31.92 AF

City of Big Bear Lake Department of Water and Power

Maximum Perennial Yield vs. Yearly Production

(maximum perennial yield based on Geoscience 2006 subunit report in acre feet)

Measured in Acre feet - Calendar Year

SUBUNIT	2001	2002	2003	2004	2005	2006	2007	2008	2009	2010	2011	2012	2013	2014	2015	2016	2017	2018	2019
Mill Creek max yield - 175 AF	0.0	0.0	0.0	0.0	0.0	0.0	29.2	30.7	0.0	0.0	0.0	0.0	0.0	0.0	0.0	0.0	0.0	0.0	0.0
Grout Creek max yield - 280 AF	126.0	124.8	116.9	104.1	108.5	95.9	106.5	93.1	88.9	84.2	78.8	81.3	92.1	79.3	81.4	70.4	72.1	73.4	75.4
Village max yield - 250 AF	285.1	354.1	252.8	273.6	268.6	187.4	167.2	134.7	152.0	142.5	111.5	78.4	57.0	110.4	108.0	128.6	134.1	131.5	101.3
North Shore max yield - 240 AF	18.1	17.1	19.0	14.4	15.1	18.2	20.1	20.3	19.8	18.7	17.8	18.3	21.4	18.3	16.7	14.7	18.1	17.2	16.4
Rathbone max yield - 1100 AF	1156.7	1011.9	944.8	840.2	967.6	970.4	947.1	914.3	877.2	787.1	931.9	932.9	994.5	858.8	853.8	769.6	970.5	774.9	929.1
West Baldwin (CSD) max yield - 500-1000 AF	806.7	940.9	637.0	892.1	214.7	278.0	647.2	741.7	585.6	391.4	238.3	423.5	548.2	839.4	699.5	715.1	572.5	620.9	483.7
Division / No. Shore max yield - 540 AF	859.2	746.9	627.6	653.2	548.0	616.7	721.1	614.0	610.6	544.0	502.6	618.3	612.3	635.7	658.0	604.7	498.4	495.0	504.5
Erwin	CSD	253.4	163.5	185.4	191.5	629.2	349.2	209.5	216.5	370.5	482.3	303.8	225.3	63.6	51.9	92.7	212.4	177.8	257.4
	DWP	529.7	615.1	614.6	716.0	542.8	584.8	648.5	617.5	567.7	576.9	519.8	486.1	535.6	367.8	474.6	575.1	452.2	572.7
max yield - 890 AF	783.1	778.6	800.0	907.5	1172.0	1147.1	997.7	827.0	784.2	947.4	1002.1	789.9	760.9	431.4	526.5	667.7	664.6	750.5	780.9
Annual Totals	4034.9	3974.3	3398.1	3685.1	3294.5	3313.7	3636.1	3375.8	3118.3	2915.3	2883.0	2942.6	3086.4	2973.3	2943.9	2970.7	2930.3	2863.2	2909.6

Sawmill 18.4

BBLDWP Water Use

	January	February	March	April	May	June	July	August	September	October	November	December	CY Prod Total
2013	72.06	51.90	44.23	51.23	76.62	88.44	93.98	87.67	74.60	50.70	38.89	59.68	790.00
2014	45.48	39.80	39.89	45.69	63.69	83.60	92.33	81.17	74.36	63.56	44.02	48.26	721.85
2015	56.34	41.66	42.46	45.33	59.85	64.75	74.73	76.31	65.21	57.02	43.83	52.31	679.80
2016	66.4	51.63	39.74	35.48	54.75	73.38	90.11	76.59	68.56	55.8	40.85	51.02	704.31
2017	58.84	48.58	42.69	45.67	62.05	76.15	86.24	75.33	63.51	57.95	41.3	47.01	705.32
2018	49.63	41.53	39.63	44.99	60.65	70.38	84.46	74.95	70.32	50.39	42.63	50.41	679.97
2019	59.22	53.97	50.12	40.75	53.92	70.16	81.07	79.28	70.81	56.15	42.92	54.33	712.70
2020	57.23	47.04	38.82	34.9									177.99

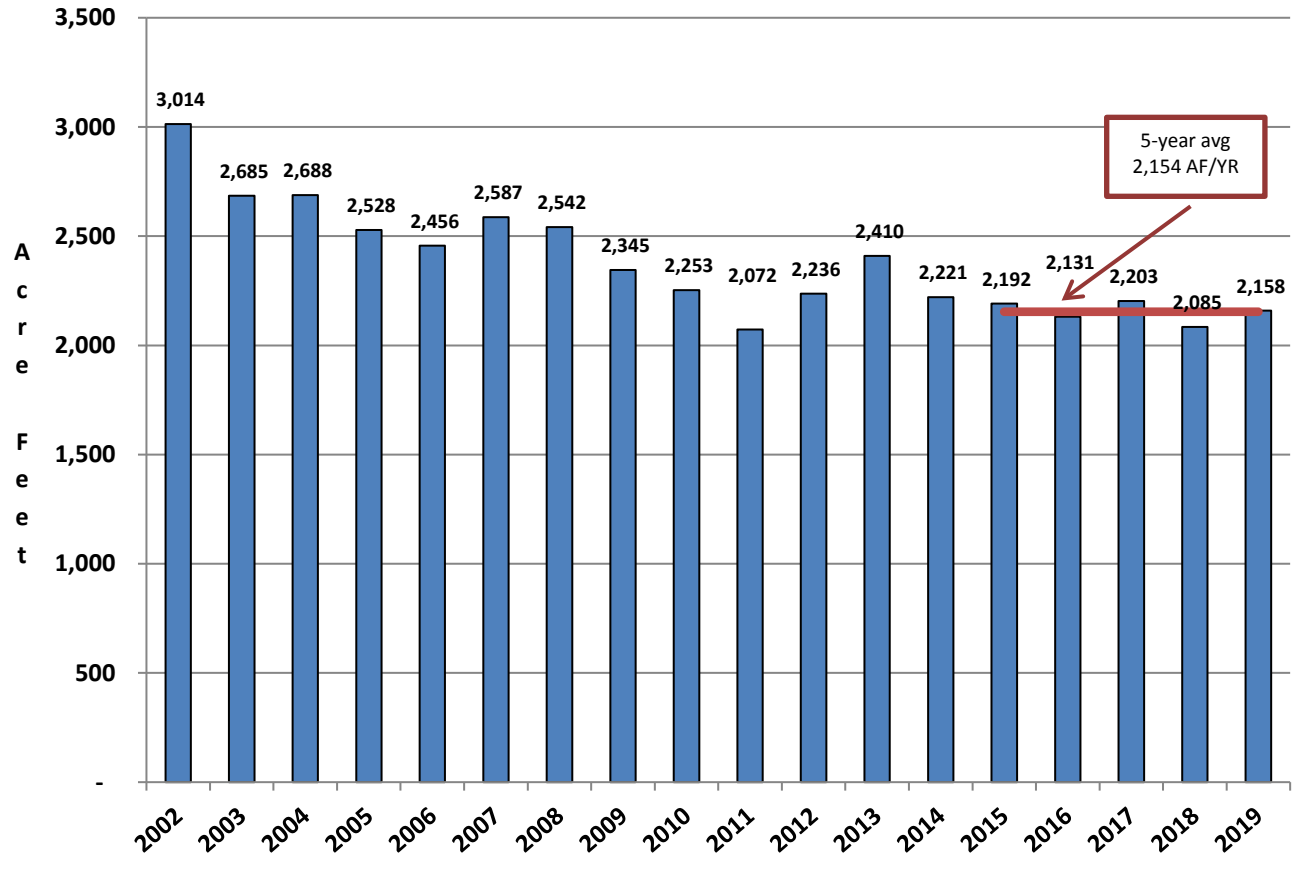
	January	February	March	April	May	June	July	August	September	October	November	December	Calendar Year Average change
Change from 2013 to 2015 for the same month	-21.82%	-19.73%	-4.00%	-11.52%	-21.89%	-26.79%	-20.48%	-12.96%	-12.59%	12.47%	12.70%	-12.35%	-11.58%
Change from 2013 to 2016 for the same month	-7.85%	-0.52%	-10.15%	-30.74%	-28.54%	-17.03%	-4.12%	-12.64%	-8.10%	10.06%	5.04%	-14.51%	-9.93%
Change from 2013 to 2017 for the same month	-18.35%	-6.40%	-3.48%	-10.85%	-19.02%	-13.90%	-8.24%	-14.08%	-14.87%	14.30%	6.20%	-21.23%	-9.16%
Change from 2013 to 2018 for the same month	-31.13%	-19.98%	-10.40%	-12.18%	-20.84%	-20.42%	-10.13%	-14.51%	-5.74%	-0.61%	9.62%	-15.53%	-12.65%
Change from 2013 to 2019 for the same month	-17.82%	3.99%	13.32%	-20.46%	-29.63%	-20.67%	-13.74%	-9.57%	-5.08%	10.75%	10.36%	-8.96%	-7.29%
Change from 2013 to 2020 for the same month	-20.58%	-9.36%	-12.23%	-31.88%									-18.51%

Residential Gallons Per-Capita Day (RGPCD)

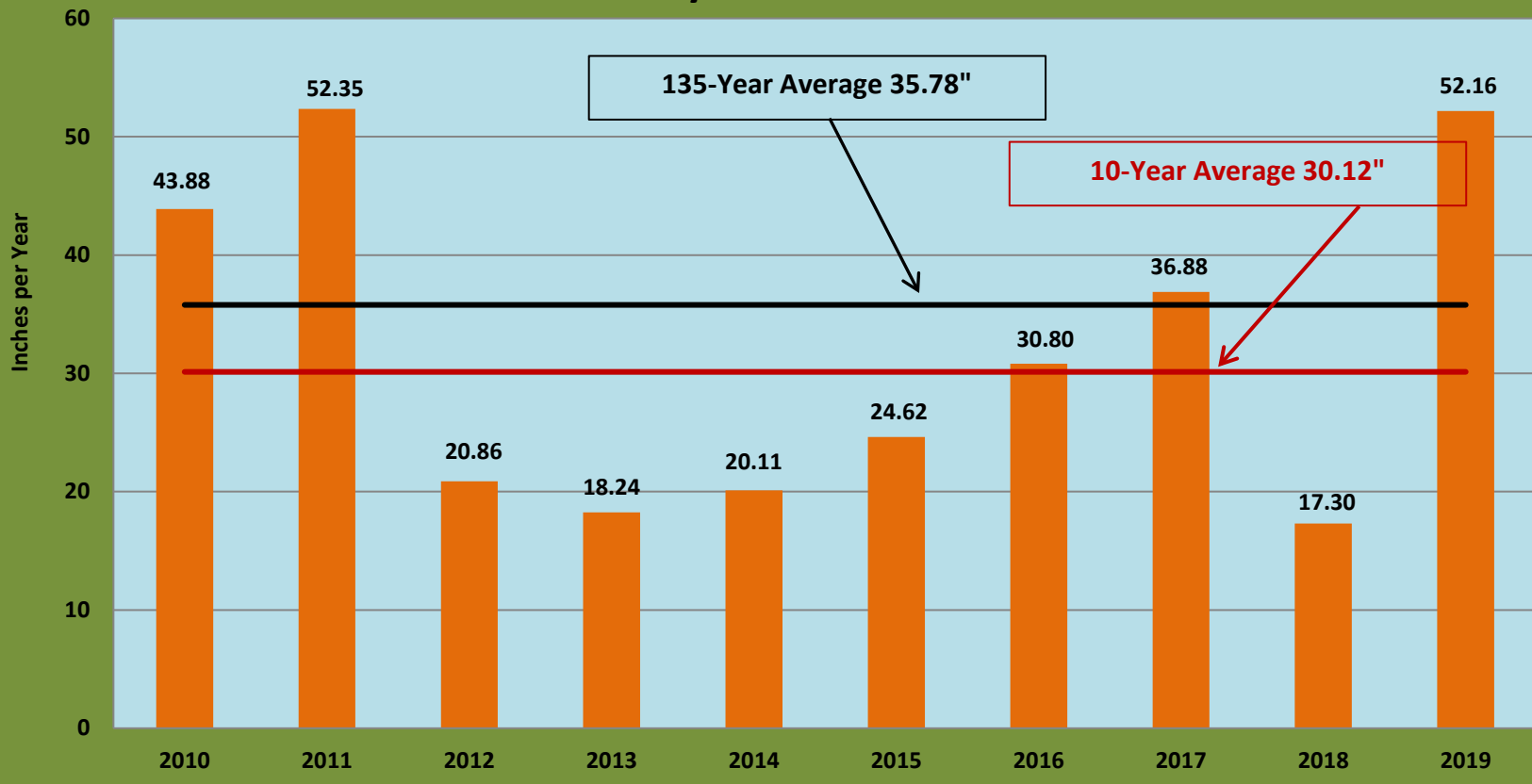
	January	February	March	April	May	June	July	August	September	October	November	December	Avg (dates shown)
2013	63.42	58.71	45.18	52.5	65.7	81.6	87	85.9	78.6	50.6	43.8	58.23	67.10
2014	40.4	46.6	34.8	43.5	57.10	76.91	85.22	79.26	78.11	63.19	49.41	46.96	58.46
2015	49.92	48.61	36.93	43.09	53.51	59.5	68.5	73.25	65.61	57.84	46.66	49.84	54.44
2016	58.45	56.5	37.75	32.71	48.18	69.77	83.2	70.05	67.32	55.42	43.25	48.38	55.92
2017	50.25	50.15	42.04	45.67	57.33	63.98	72.26	71.00	61.05	57.91	41.82	44.63	54.84
2018	43.1	42.16	37.52	43.21	52.13	59.76	73.49	69.64	62.47	44.77	39.4	43.78	50.95
2019	48.56	52.31	42.35	34.55	42.14	57.17	66.6	65.87	63.46	51.04	41.27	47.71	51.09
2020	46.66	44.47	34.22	32.2									39.39

Historical Production

2019 Production is 7/1/18 - 6/30/19



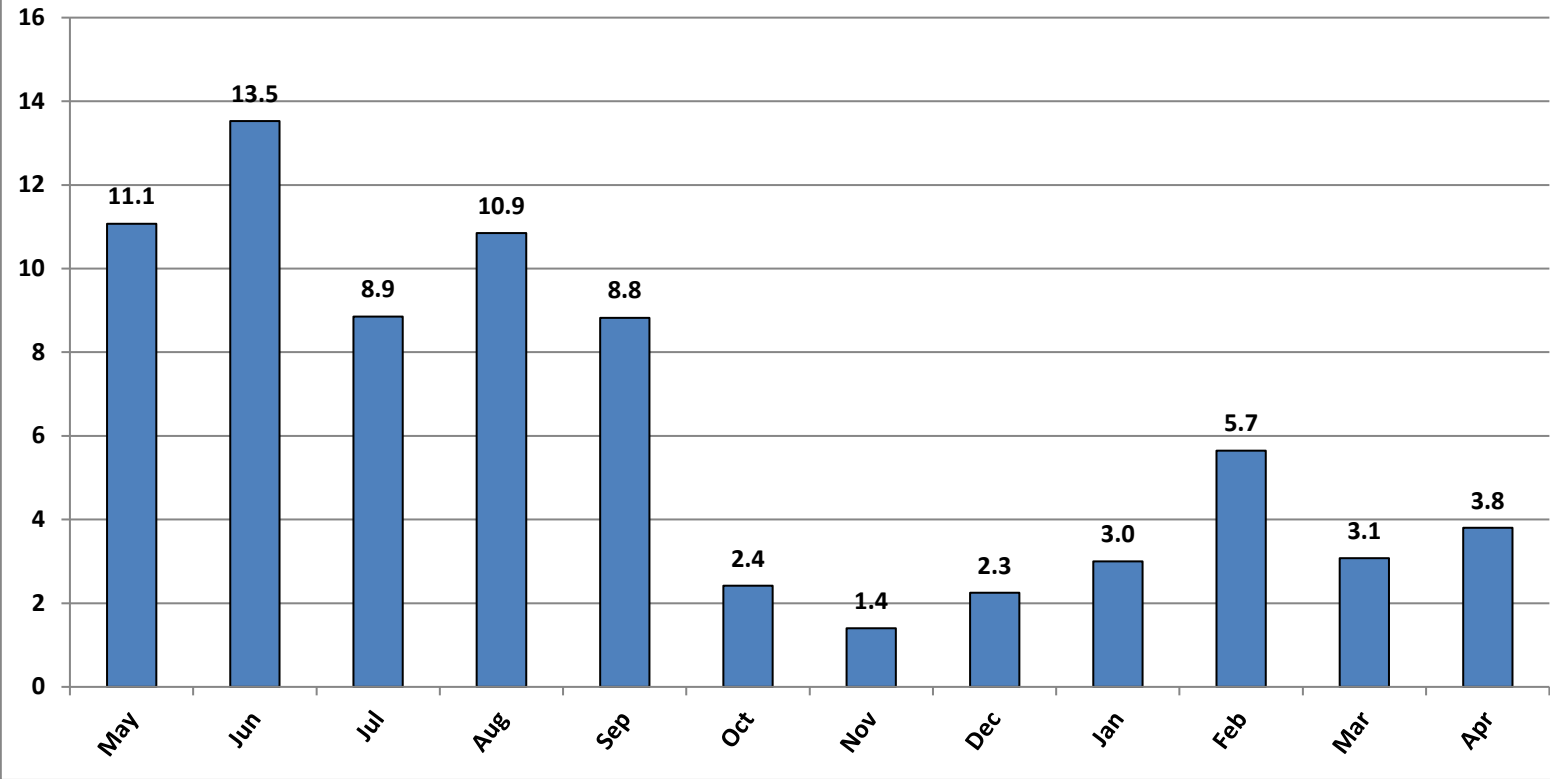
Annual Rainfall at Big Bear Dam July 1 - June 30



Note: Rainfall July 1, 2019 - May 31, 2020 = 30.13"

**EDUs connected
Preceding 12 months
April 2020**

**Total EDUs
74.72**



**New Connections
Precedimng 12 Months
April 2020**

46 Total

